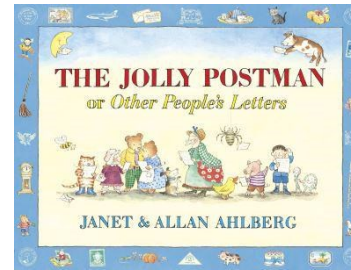
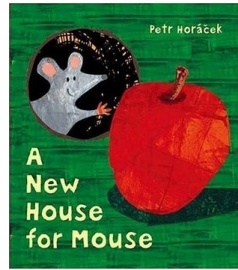
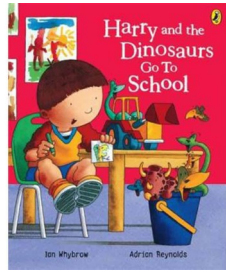
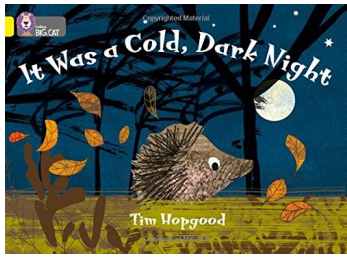
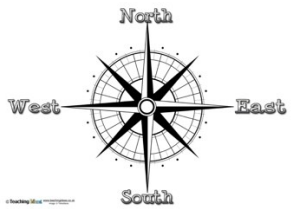
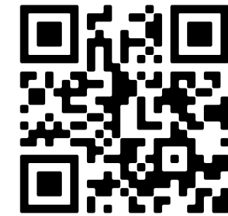


Where do I belong?

Books we will read:



Our Rhyme: 1,2 Buckle my shoe



Compass



Map



Family



Class



School



Loughborough



United Kingdom



Sock Man



Carillon



Loughborough University

Map	A drawing to show where things are.
Direction	Where something moves or points towards.
Landmark	A structure or building that can be easily recognised.
Compass	A tool for finding Direction.
Country	Land controlled by its own Government.
Family	A group of people who are related to each
School	A place for teaching and learning
Town	A place where people live and work. It is larger than a village and smaller than acity

P.E

Run

Stop

Space

Balance

Direction

Position

Pose

Exercise

Co-ordination

English/Grammar

Letter

Word

Capital letter

Full stop

Question mark

Singular

Plural

Blend

Segment

Grapheme

Phoneme

RSHE

Feelings

Rules

Success

R.E

Faith

God

Celebration

Maths

Ones

Tens

Digits

Order

Numerals

Before

After

Above

Below

In between

Bigger

Smaller

Add

Plus

Altogether

More

Total

Sum

Autumn 1

Reception/Year 1

Science

Senses

Sight

Touch

Hearing

Taste

Smell

ART

Drawing

Painting

Collage

Primary colours

Sketch book

Music

Pulse

Pitch

Tempo

Rhythm

Beat

Computing

Mouse

Monitor

Keyboard

Keys

Internet

Cursor

Program

Command